

# Village in the Pines

## Approved Wall and Trim Exterior Colors - May 1, 2017

### APPROVED TRIM COLORS (6)

Terra-Cotta (custom mix)

Sherwin Williams

Formula:

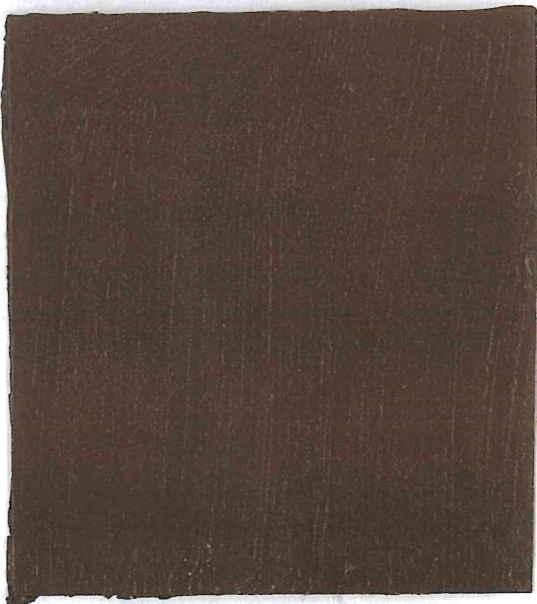
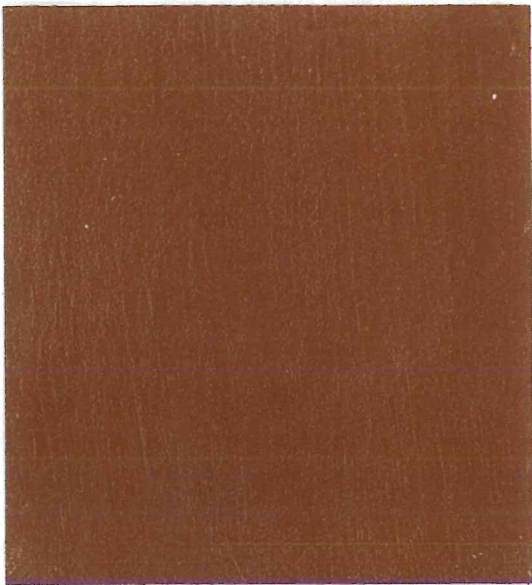
101 – 3

109 – 10.5

111 – 12.5

113 - 9

ULTRA DEEP BASE

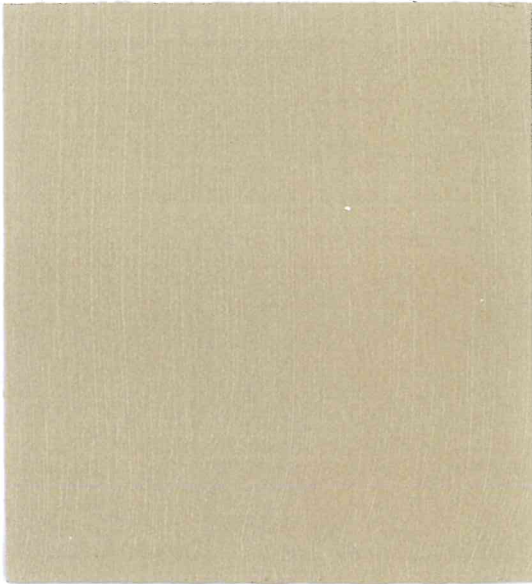


Lowe's of SW Sarasota FL #2933 Tinter A  
4/11/2017; Sherwin-Williams, Half Pint, 2002-9A, Lyndhurst Mahogany, 1/2 Half Pint,  
Color Sample, 703094 D  
101-17, 103-1.25, 109-10.25, 113-0.5

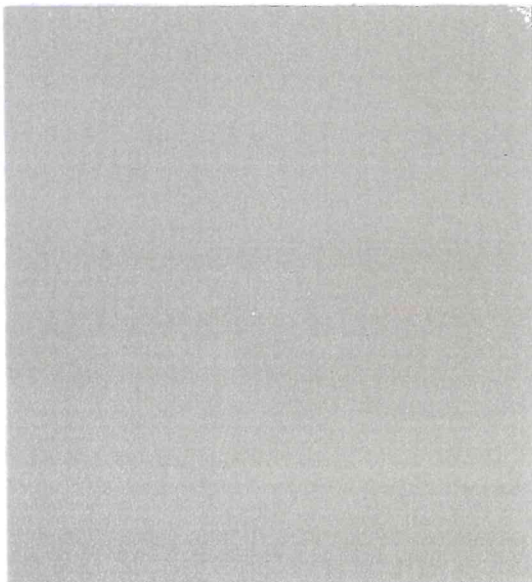
# Village in the Pines

## Approved Wall and Trim Exterior Colors - May 1, 2017

### APPROVED TRIM COLORS (6)



Lowe's of SW Sarasota FL #2933 Tinter A  
4/11/2017; Sherwin-Williams, Half Pint, SW7533, Khaki Shade(SW7533), Color  
Sample, Half Pint, Extra Wht  
101-2.773, 107-6.211, 109-0.469



Lowe's of SW Sarasota FL #2933 Tinter A  
4/11/2017; Sherwin-Williams, Half Pint, 5002-1B, Smoke Infusion, /Half Pint,  
Color Sample, 703093 EW  
103-3.5, 114-2.25, 217-2.75

# Village in the Pines

## Approved Wall and Trim Exterior Colors - May 1, 2017

### APPROVED WALL COLORS (2)



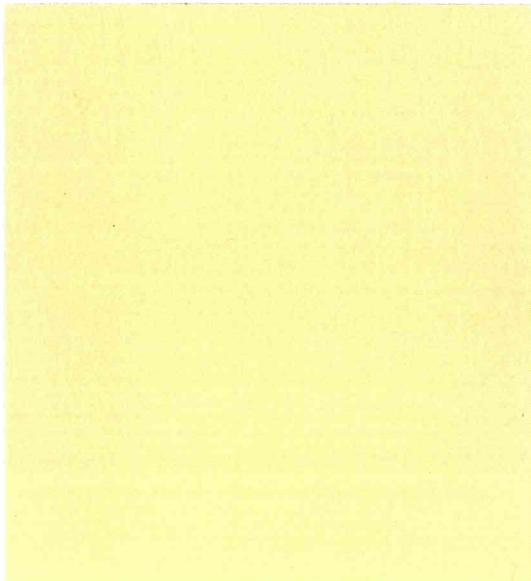
**Cream**

Sherwin Williams formula

107 – 0.75

214 – 0.25

Extra White Base

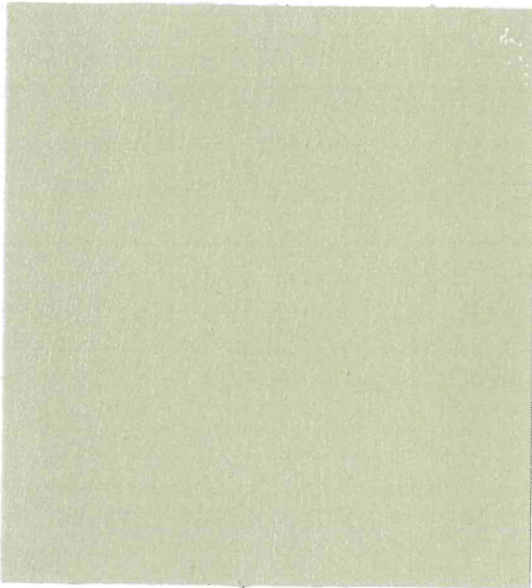


Lowe's of SW Sarasota FL #2933 Tinter A  
4/11/2017; Sherwin-Williams, Half Pint, SW6681, Butter Up(SW6681), Color  
Sample, Half Pint, Extra Wht  
116-0.469, 214-5.664

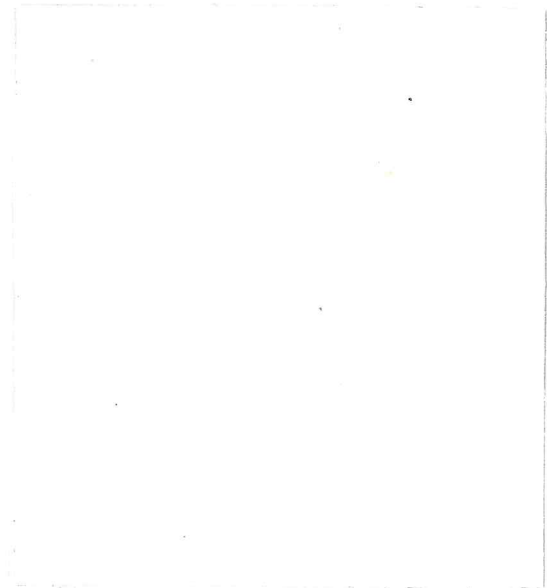
## Village in the Pines

### Approved Wall and Trim Exterior Colors - May 1, 2017

#### APPROVED TRIM COLORS (6)



Lowe's of SW Sarasota FL #2933 Tinter A  
4/11/2017; Sherwin-Williams, Half Pint, HGSW3236, Modern Safari, Color  
Sample, Half Pint, Extra Wht  
101-1.953, 103-0.234, 107-3.438



Lowe's of SW Sarasota FL #2933 Tinter A  
4/11/2017; Sherwin-Williams, Half Pint, OL107, Delicate White, /Half Pint, Color  
Sample, 703093 EW  
105-0.25

#### NOTES:

1. All colors are based on Sherwin Williams formulas
2. Roof mates must agree on one color for trim and one for wall
3. All exterior painting must be pre-approved by the Architectural Control Committee (ACC)
4. Painting of units not conforming to the above two wall colors or to the six trim colors must conform to these selections when being re-painted.